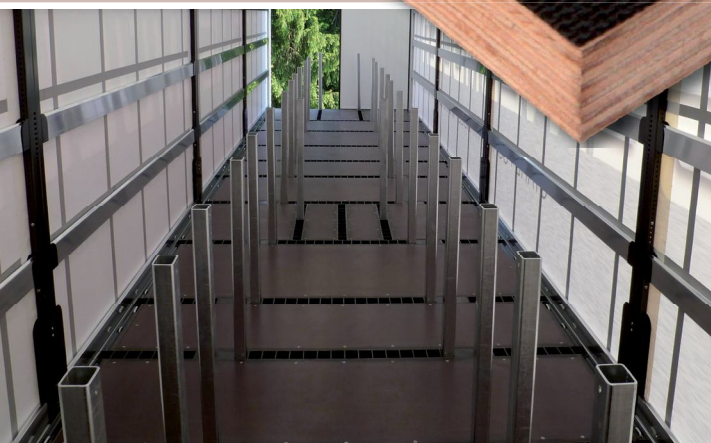
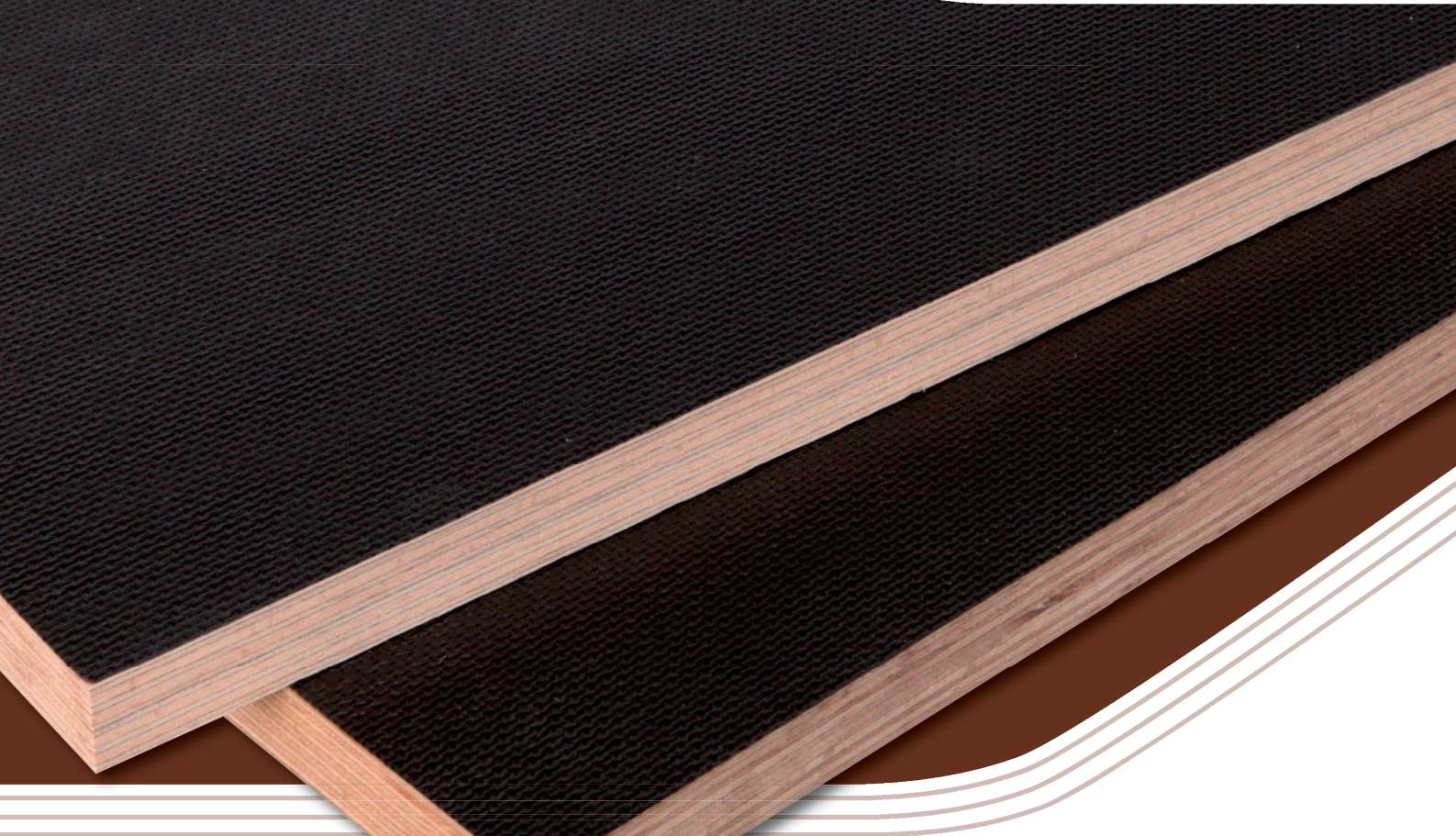


# DYAS<sup>®</sup>

QUALITY IN ALL LAYERS SINCE 1930



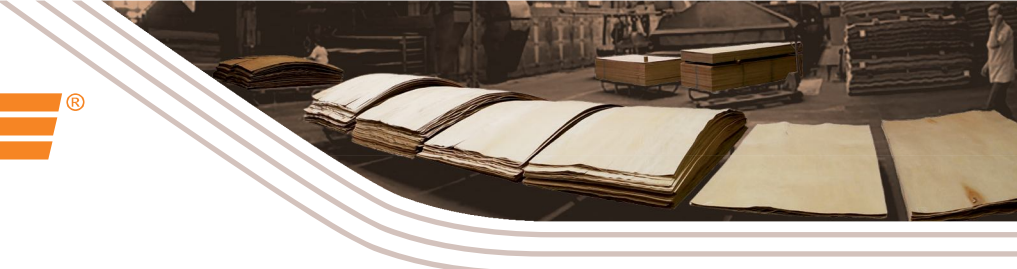
## DYAS film

Water-resistant DYAS FILM is made of many plies of rotary-cut beech veneers glued together with a phenol-formaldehyde adhesive. The grains of adjoining layers are at right angles to each other. The surface is covered on both sides by a phenolic film and its edges are painted with a protective water-resistant coating.

[www.dyas.eu](http://www.dyas.eu)

CE  
Certificate ISO9001  
Certificate PEFC





### DYAS Film

Is a health harmless plywood complying with the E-1 Class of formaldehyde escape according to ČSN EN 717-1.

### Application:

DYAS Film is mainly used in the building industry for the production of building elements. It is also widely used for the production of containers, railway carriages, poster surfaces, agricultural constructions, for shuttering and as a flooring in the trucks and trailers.

### Thickness:

9, 10, 12, 15, 18, 21, 25, 30, 35 mm  
(special thicknesses on customers' request)

### Gluing:

Class of gluing 3 (AW 100) - ČSN EN 314-2  
– can be used in unprotected exterior areas according to ČSN EN 636-3

### Dimensions:

1 250 x 2 500 mm  
1 500 x 2 500 mm  
(cut-to sizes on customers' request)

### Quality:

As per PN 8/DY/97 – water resistant plywood with phenolic film finish

### Type:

antislip/ smooth

### Moisture:

6% to 12% (at the time of delivery)

### Surface:

Surface is covered with a phenolic film of cca 150g/m<sup>2</sup>

| Thickness | Number of plies | Volume weight        | Thickness tolerance | Bending strength<br>(surface veneer grain orientation) |                        |
|-----------|-----------------|----------------------|---------------------|--|------------------------|
|           |                 | (kg/m <sup>3</sup> ) | (mm)                | podélný  | příčný                 |
| 9         | 5x/7x           | 780-810              | +0,2/-0,5           | 60,0 N/mm <sup>2</sup>                                 | 30,0 N/mm <sup>2</sup> |
| 10        | 7x              |                      |                     |  |                        |
| 12        | 7x/9x           |                      |                     |  |                        |
| 15        | 9x/11x          |                      |                     |  |                        |
| 18        | 11x/13x         |                      |                     |  |                        |
| 21        | 13x/15x         |                      |                     |  |                        |
| 25        | 15x             |                      |                     |  |                        |
| 27        | 15x             |                      |                     |  |                        |
| 30        | 17x             |                      | +0,3/-1,2           |  |                        |